



STUDENT NAME \_\_\_\_\_

**Important:** How long did it take you to complete this test, not counting the rhythm recordings? \_\_\_\_\_

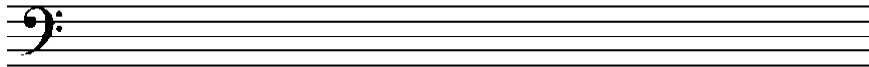
**NOTE:** It is very important that we get an accurate impression of your theory skills and fluency so that we may place you in a class level that will be most helpful to you. Please read the following instructions carefully and make sure to complete all pages.

- Take the test in one sitting (do not leave parts of it unfinished and come back later)
- There is no time limit, but DO time yourself, and indicate on the last page how much time you spent on the test
- You may complete the tasks in any order
- If you have absolutely no idea about a question or don't understand the topic, please let us know that with a big question mark (?)
- Do not refer to any outside materials (books, notes) for help
- Even if you cannot complete the last few parts of the test, be sure to answer all of the questions in part.

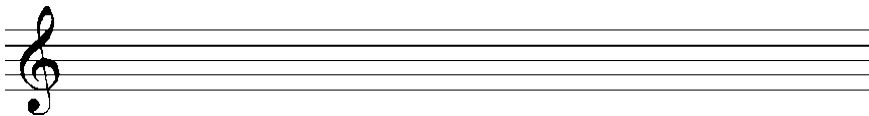
**Part 1.**

Write the requested scales.

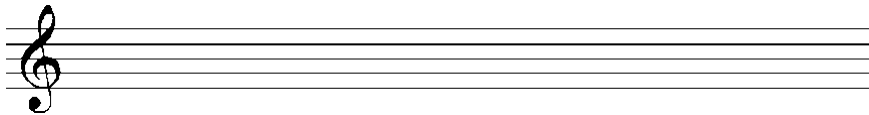
D Major



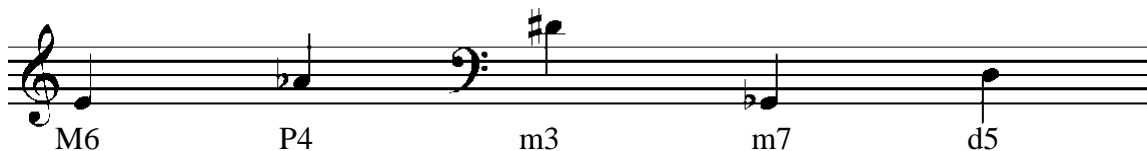
G harmonic minor



B natural minor

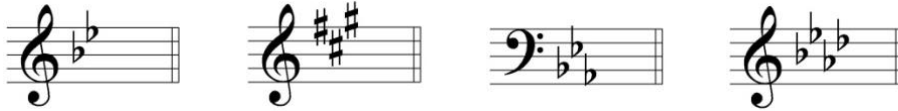


**Part 2.** Write the requested intervals above the given note.



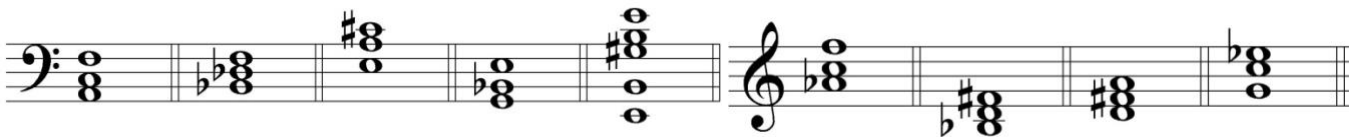
STUDENT NAME \_\_\_\_\_

**Part 3.** Identify the following key signatures, giving BOTH the major and relative minor key.



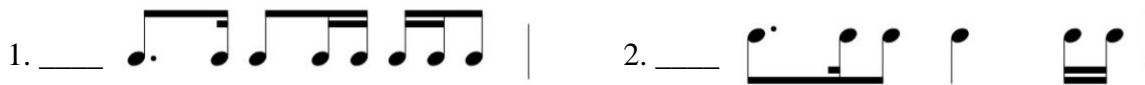
\_\_\_\_\_

**Part 4.** Identify the following triads. Your label should include the chord root (D, F, A, etc.), the chord quality (M, m, +, o), and the inversion (if inverted, <sup>6</sup>, <sub>4</sub>). The first answer is given.



Ex. FM<sup>6</sup> \_\_\_\_\_

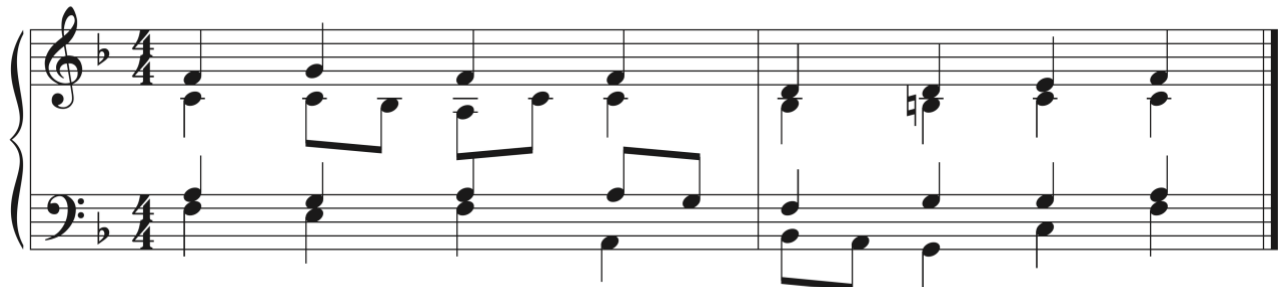
**Part 5.** For each measure below, write the best possible time signature in the blank.



**Part 6.** Insert bar lines into the rhythm below so that it matches the given time signature.

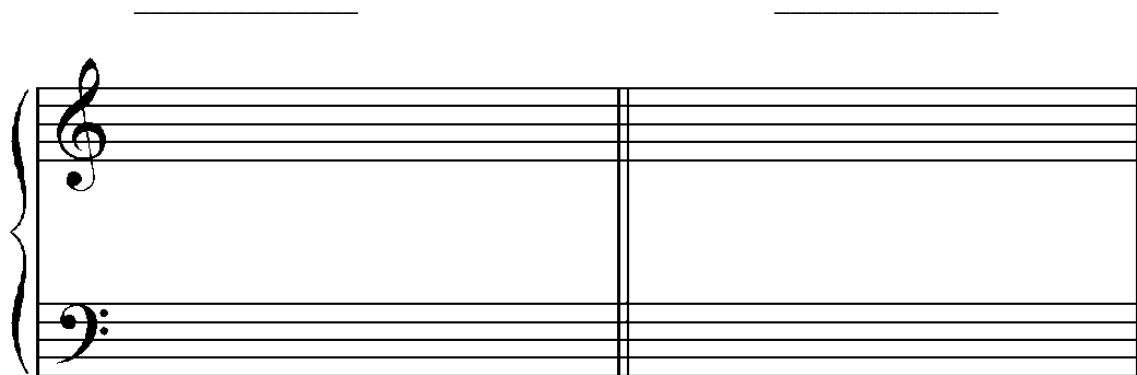


**Part 7.** Analyze the choral phrase below with Roman Numerals (be sure to identify the key). Label any non-chord tones, and identify the type of cadence.



STUDENT NAME \_\_\_\_\_

**Part 8.** Write the following cadential progressions in four voices, and then write the type of cadence in the blank above the staff. Use a key signature.



EM: IV – V<sup>7</sup> – I

Gm: ii<sup>o6</sup> – V – VI

**Part 9.** Answer the following questions:

1. What clef do you read most of the time (circle one)?

treble          bass

2. How good are you at reading the OTHER clef?

terrible          not bad    decent          good          excellent

3. What note is the leading-tone in the key of E minor?

E-flat          D-natural          D-sharp          F-sharp

4. What is the correct spelling of an E-flat minor triad?

Eb-G-Bb          Eb-F#-Bb          Eb-F#-A#          Eb-Gb-Bb

5. What chord is the dominant in the key of D minor?

A major          G major          A minor          G minor

6. If you are a high school student, have you taken AP theory?          YES          NO

**Part 9.** Rhythm Lab. LSA will offer specialized Rhythm Labs as part of the theory curriculum.

*Remember, this is not a judgement of your musicianship or musical ability.* It is to place you in the appropriate level of instruction. A level that will be most helpful to you.

Below are three rhythmic examples with a specified tempo. Each student is to make an audio or video recording of themselves performing those rhythms in the following way.

1. State your name and which example you are performing.
2. Count verbally with your voice, while performing the notated rhythm by clapping or tapping your hands on the table, desk, etc. An example can be found here:  
[https://www.youtube.com/watch?v=wMd75a7Xx\\_g](https://www.youtube.com/watch?v=wMd75a7Xx_g)
3. Upload a single audio or video file named 'LastName\_Rhythm.mov or mp4 or mp3 or wav, etc.
4. It is our hope that you will try all 3 rhythms to the best of your ability.

### Example 1

♩ = 84



### Example 2

♩ = 66



### Example 3

See next page. This one is meant to be very challenging. Pay attention to the time signature changes and the metric modulations.

♩=72

(♩=♩)

4/4 4/4 6/8 2/4

5 (♩=♩)

2/4 2/4 7/16 5/16 7/16

9

7/16 5/16 4/4 4/4